

ASUS® PC Probe



USER'S MANUAL

No part of this manual, including the products and software described in it, may be reproduced, transmitted, transcribed, stored in a retrieval system, or translated into any language in any form or by any means, except documentation kept by the purchaser for backup purposes, without the express written permission of ASUSTeK COMPUTER INC. (“ASUS”).

ASUS PROVIDES THIS MANUAL “AS IS” WITHOUT WARRANTY OF ANY KIND, EITHER EXPRESS OR IMPLIED, INCLUDING BUT NOT LIMITED TO THE IMPLIED WARRANTIES OR CONDITIONS OF MERCHANTABILITY OR FITNESS FOR A PARTICULAR PURPOSE. IN NO EVENT SHALL ASUS, ITS DIRECTORS, OFFICERS, EMPLOYEES OR AGENTS BE LIABLE FOR ANY INDIRECT, SPECIAL, INCIDENTAL, OR CONSEQUENTIAL DAMAGES (INCLUDING DAMAGES FOR LOSS OF PROFITS, LOSS OF BUSINESS, LOSS OF USE OR DATA, INTERRUPTION OF BUSINESS AND THE LIKE), EVEN IF ASUS HAS BEEN ADVISED OF THE POSSIBILITY OF SUCH DAMAGES ARISING FROM ANY DEFECT OR ERROR IN THIS MANUAL OR PRODUCT.

Product warranty or service will not be extended if: (1) the product is repaired, modified or altered, unless such repair, modification or alteration is authorized in writing by ASUS; or (2) the serial number of the product is defaced or missing.

Products and corporate names appearing in this manual may or may not be registered trademarks or copyrights of their respective companies, and are used only for identification or explanation and to the owners’ benefit, without intent to infringe.

- Intel, LANDesk, and Pentium are registered trademarks of Intel Corporation.
- Windows and MS-DOS are registered trademarks of Microsoft Corporation.
- Adobe and Acrobat are registered trademarks of Adobe Systems Incorporated.

For previous or updated manuals, BIOS, drivers, or product release information, contact ASUS at <http://www.asus.com.tw>

SPECIFICATIONS AND INFORMATION CONTAINED IN THIS MANUAL ARE FURNISHED FOR INFORMATIONAL USE ONLY, AND ARE SUBJECT TO CHANGE AT ANY TIME WITHOUT NOTICE, AND SHOULD NOT BE CONSTRUED AS A COMMITMENT BY ASUS. ASUS ASSUMES NO RESPONSIBILITY OR LIABILITY FOR ANY ERRORS OR INACCURACIES THAT MAY APPEAR IN THIS MANUAL, INCLUDING THE PRODUCTS AND SOFTWARE DESCRIBED IN IT.

Copyright © 1998 ASUSTeK COMPUTER INC. All Rights Reserved.

Product Name:	ASUS PC Probe
Manual Revision:	1.10
Release Date:	February 1998

ASUSTeK COMPUTER INC.

Marketing

Address: 150 Li-Te Road, Peitou, Taipei, Taiwan 112
Telephone: +886-2-2894-3447
Fax: +886-2-2894-3449
Email: info@asus.com.tw

Technical Support

Fax: +886-2-2895-9254
BBS: +886-2-2896-4667
Email: tsd@asus.com.tw
WWW: www.asus.com.tw
FTP: ftp.asus.com.tw/pub/ASUS

ASUS COMPUTER INTERNATIONAL

Marketing

Address: 6737 Mowry Ave, Mowry Business Center,
Building 2, Newark, CA 94560, USA
Fax: +1-510-608-4555
Email: info-usa@asus.com.tw

Technical Support

Fax: +1-510-608-4555
BBS: +1-510-739-3774
Email: tsd-usa@asus.com.tw
WWW: www.asus.com
FTP: ftp.asus.com.tw/pub/ASUS

ASUS COMPUTER GmbH

Marketing

Address: Harkort Str. 25, 40880 Ratingen, BRD, Germany
Telephone: 49-2102-445011
Fax: 49-2102-442066
Email: info-ger@asus.com.tw

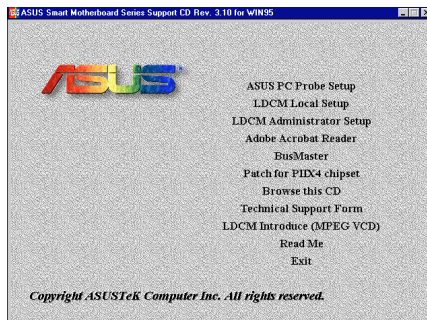
Technical Support

Hotline: 49-2102-499712
BBS: 49-2102-448690
Email: tsd-ger@asus.com.tw
WWW: www.asuscom.de
FTP: ftp.asuscom.de/pub/ASUSCOM

Installing and running ASUS PC Probe

The ASUS PC Probe is a convenient utility to monitor the computer system's vital components: fan rotations, voltages, and temperatures.

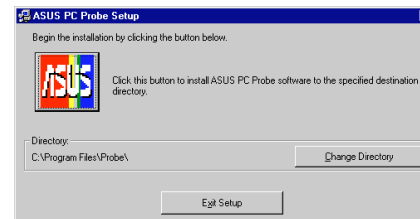
NOTE: In order for the ASUS PC Probe to run, Intel's LDCM utility cannot be installed.



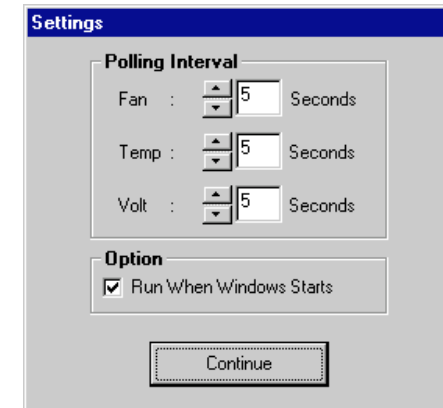
1. Click on "ASUS PC Probe Setup" from the autorun.



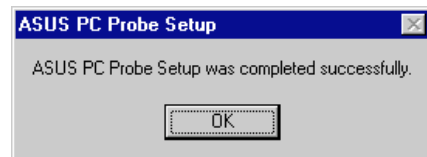
2. Click "OK" after reading the welcome message.



3. Click the install button.



4. Configure the settings.



4. Click "OK" when the installation is completed. PC Probe will run automatically.



When ASUS PC Probe starts, a splash screen appears allowing you to "Show Monitor" or "Close." You can select whether you want the splash screen to show in the future.



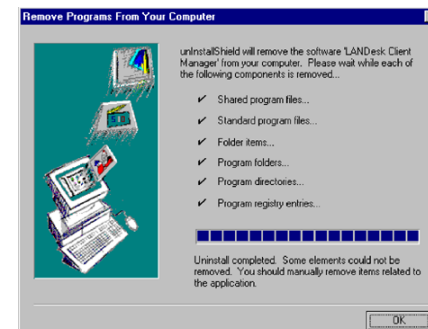
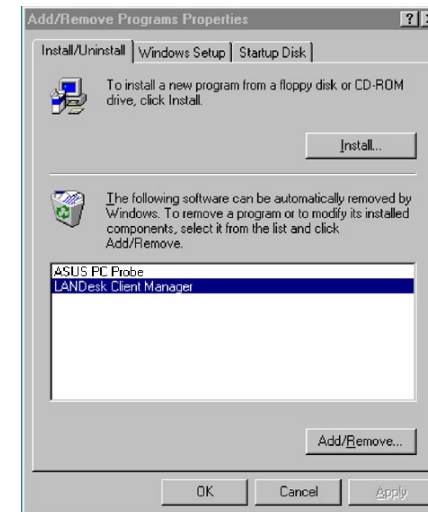
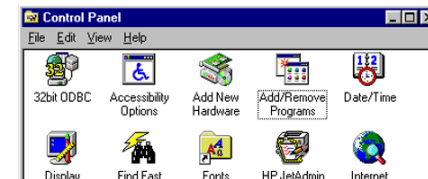
Click "ASUS PC Probe" from the "Start" button to run the utility if you exit the utility or did not check "Run when Windows Starts."



A "doctor" will appear on the task bar indicating that ASUS PC Probe is running. Left clicking the "doctor" will allow you to see your PC status.

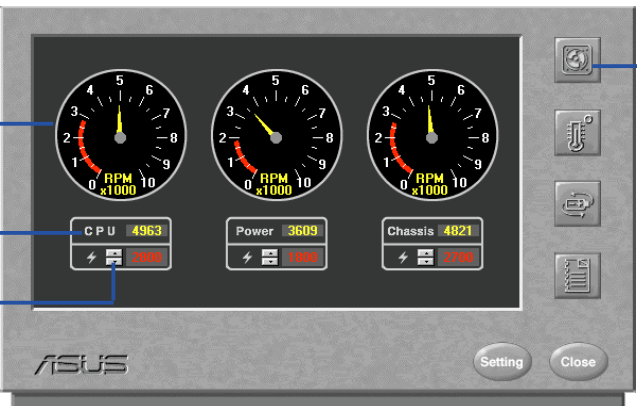
Uninstalling Programs

1. If other hardware monitoring programs such as the Intel LDCM are installed, the ASUS PC Probe will not run.
2. Uninstall other hardware monitoring programs if you want to use the ASUS PC Probe by running “Add/Remove Programs” from the Control Panel.
3. The ASUS PC Probe can also be removed by the same method.



Using the ASUS PC Probe

Fan Rotation Status



The interface displays three analog gauges for fan rotation: CPU (4963 RPM), Power (3609 RPM), and Chassis (4821 RPM). Below each gauge is a digital readout and a warning threshold indicator. The CPU gauge shows a threshold of 2500 RPM. The Power gauge shows a threshold of 1500 RPM. The Chassis gauge shows a threshold of 2700 RPM. A 'Setting' button is located at the bottom right of the interface.

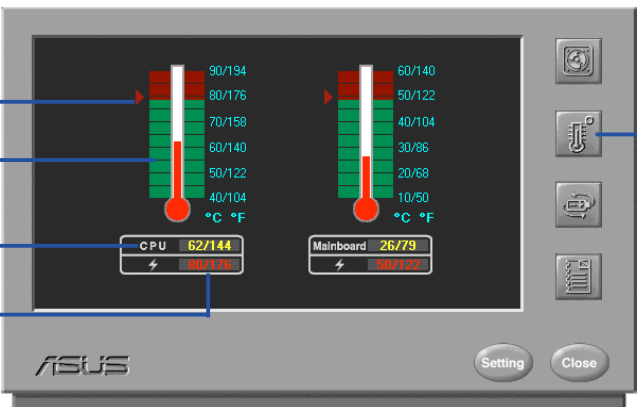
Analog view of PC's fan rotation

Digital view of PC's fan rotation

PC's Fan warning threshold adjustment

Click here for PC Fan Rotation Status (as shown here)

PC Temperature Status



The interface displays two vertical temperature gauges: CPU (62/144) and Mainboard (26/79). Each gauge shows a current temperature and a warning threshold. The CPU gauge shows a warning threshold of 80/176. The Mainboard gauge shows a warning threshold of 60/140. A 'Setting' button is located at the bottom right of the interface.

Temperature Warning threshold adjustment

Analog view of PC's temperature

Digital view of PC's temperature

Digital view of PC's temperature warning threshold

Click here for PC Temperature Status (as shown here)

Using the ASUS PC Probe

PC Voltage Status

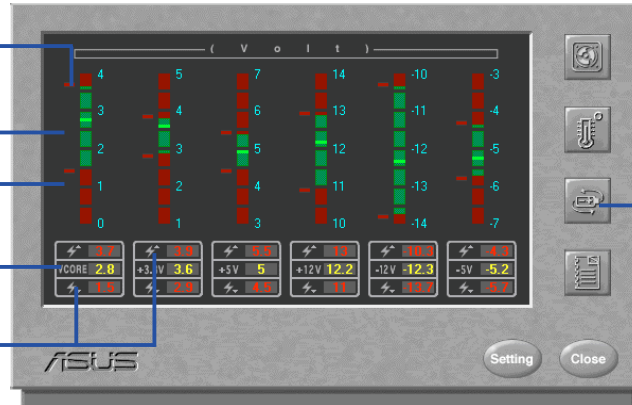
Upper warning threshold adjustment

Analog view of PC's voltages

Lower warning threshold adjustment

Digital view of PC's voltages

Digital view of PC's voltage warning thresholds



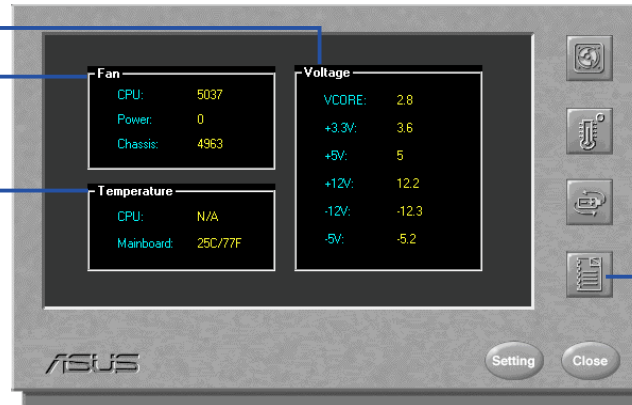
Click here for PC Voltage Status (as shown here)

PC Status Summary

PC's Voltages

PC's Fan Rotations per minute

PC's Temperature °C/°F



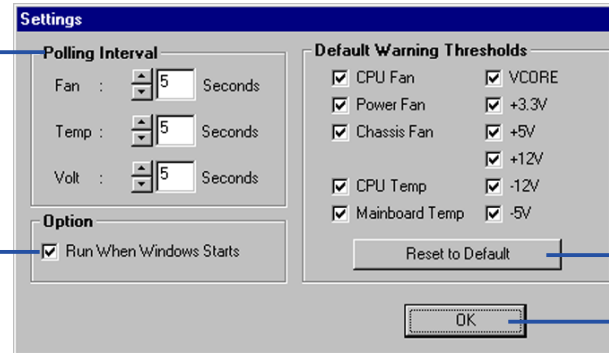
Click here for PC Status Summary (as shown here)

Using the ASUS PC Probe

PC Probe Settings

Change PC Probe refresh times here

Check here to start PC Probe each time you enter Windows.



Check the items above you wish to reset to its default values and click this button.

Click here to exit the settings screen.



Right clicking the “doctor” will bring up a menu to turn ASUS PC Probe on, off, or exit the utility.



The “doctor” appears gray when off.



When there is a problem, the “doctor’s” light flashes red, the PC speaker sounds, and ASUS PC Probe monitor is displayed.