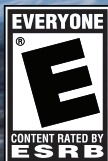


MANUAL

# Ship Simulator

## EXTREMES





# TABLE OF CONTENTS

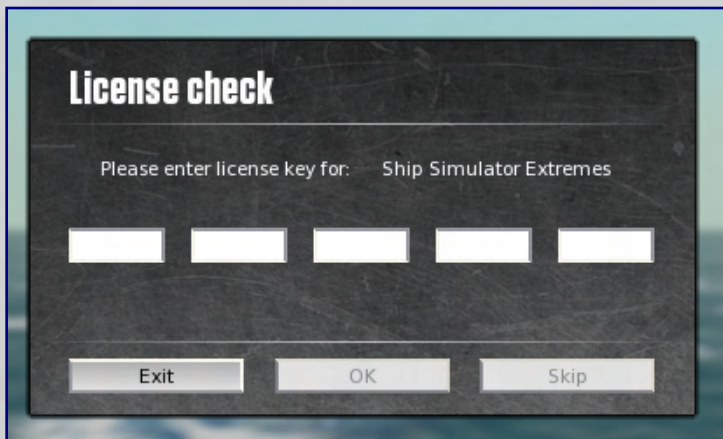
<b>1.</b>	<b>GENERAL</b>	<b>4</b>
<b>2.</b>	<b>LICENSE CHECK</b>	<b>5</b>
<b>3.</b>	<b>PROFILE</b>	<b>6</b>
<b>4.</b>	<b>MAIN MENU</b>	<b>7</b>
<b>5.</b>	<b>RANKS AND REWARDS</b>	<b>8</b>
5.1	Classes and Ranks	8
5.2	Rewards	8
<b>6.</b>	<b>GAME TYPES</b>	<b>10</b>
6.1	Campaigns	10
6.2	Missions	11
6.3	Free Roaming	11
6.4	Multiplayer	12
<b>7.</b>	<b>INTERFACE</b>	<b>13</b>
7.1	Brief description	13
7.2	Controls overview	14
7.3	Keyboard control	15
7.4	Mouse functions	16
7.5	Ship tools	17
7.6	Conning	20
7.7	Radar	20
7.8	Chart	20
7.9	Objectives	21
<b>8.</b>	<b>OPTIONS</b>	<b>22</b>
8.1	Graphic settings	22
8.2	Controls	23
8.3	Sounds	24
8.4	Multiplayer	24
<b>9.</b>	<b>TROUBLESHOOTING</b>	<b>25</b>
9.1	Minimum Computer Specifications	25
9.2	Questions and answers.	25
9.3	Technical support	27
<b>10.</b>	<b>EPILEPSY WARNING NOTES</b>	<b>28</b>
<b>11.</b>	<b>LICENSE AGREEMENT</b>	<b>29</b>
<b>12.</b>	<b>CREDITS</b>	<b>35</b>

# 1. GENERAL

Welcome to Ship Simulator Extremes, the exciting new addition to the successful Ship Simulator series. Ship Simulator Extremes features a whole new range of ships and environments, from Bora Bora to Sydney Harbour!

## 2. LICENSE CHECK

When Ship Simulator Extremes is started for the first time a license key is requested. This license key can be found inside the DVD box or on the back side of this manual. This license key is needed to play this game.

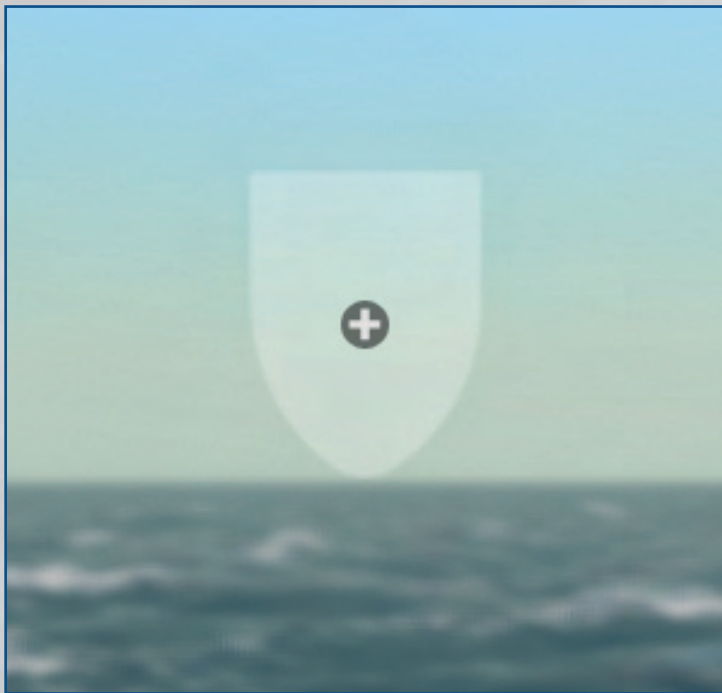


The image shows a screenshot of a 'License check' dialog box. The title 'License check' is at the top left. Below it, the text 'Please enter license key for: Ship Simulator Extremes' is displayed. There are five empty rectangular input fields arranged horizontally for entering the license key. At the bottom, there are three buttons: 'Exit', 'OK', and 'Skip'.

## 3. PROFILE

After the license check you will be taken to the profile screen where you can create a new profile for the game.

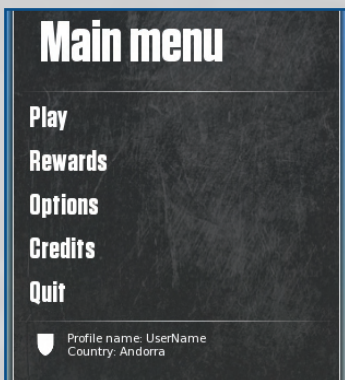
Your profile contains information about completed missions, campaigns and achievements you reached while playing Ship Simulator Extremes. Also custom control settings are stored in the profile.



You can create a new profile with the + button. All the ranks you obtain by playing missions are stored in this profile.

## 4. MAIN MENU

After creating a profile you will be taken to the main menu. In this menu you can select and start missions, manage your profiles, check your rewards and change the game settings.



If you don't see a similar ocean, your PC's graphics card may be below the minimum standard required to run the game.

# 5. RANKS AND REWARDS

You can gain mission ranks and rewards by completing missions.

## 5.1 CLASSES AND RANKS

By playing campaign missions, you can improve your rankings. There are six different classes: Greenpeace, Cargo, Motorboat, Special, Tourist and Tugs. Each class has 5 ranks (stages). The more difficult the mission, the more you can improve your ranking. In the table below, all types of classes are shown.



GREENPEACE



SPECIAL



CARGO



TOURIST



MOTORBOAT



TUGS

## 5.2 REWARDS

### Rewards

- Antarctic Postcard
- Atlanta Postcard
- Bora Bora Postcard
- Dover Postcard
- Hamburg Postcard**
- Hanover Postcard
- New York Postcard
- Pedstoe Postcard
- Rotterdam Postcard
- San Francisco Postcard
- Sydney Postcard
- Solent Postcard
- Departing from down under
- Dust Taw
- Heavy traffic in Hamburg

Unlock rewards by completing campaign missions

### Hamburg Postcard



Completing campaign missions will unlock rewards. There are two different types of rewards: images (postcards, articles and photos) and movies. The movie rewards can be unlocked by completing the Greenpeace missions. These rewards can be viewed from the main menu and are also shown after a mission is completed successfully.

When a movie reward is unlocked it can be played inside Shipsim Extremes. A play button will appear at the top of the reward window. When this play button is pressed a full screen movie will be shown.

# 6. GAME TYPES

Ship Simulator Extremes has the following game types: Campaign, Free roaming, Mission, Custom Mission and Multiplayer. Each of these game types will be described below.

## 6.1 CAMPAIGNS

Campaigns are a completely new feature in Ship Simulator! The campaigns consist of a series of linked missions and provide rewards that the normal missions don't provide! Carry out an ecological mission with the Esperanza from Greenpeace or take on a job as tugboat captain in different harbours around the world. If that doesn't do it for you then you can take the Ocean Star for a cruise around the world!

### 6.1.1 Campaign selection

The campaign selection menu can be accessed via the main menu. In the campaign selection screen you will see different tabs for each campaign. After choosing a campaign, a mission list will follow. At first there will be only one mission available. If you complete this, more missions will come up.

### 6.1.2 Different Campaigns

There are three different campaigns, each with its own goals.

- **GREENPEACE:** In this campaign you take the Esperanza and other Greenpeace ships for ecological missions to try and protect the planet! Protest against whaling, illegal activities and try to stop ships from dropping dangerous waste into the ocean.
- **TOURIST TALES:** The Ocean Star is leaving on a long tour around the world, stopping at several tropical locations. Unfortunately not everything goes as planned...
- **CORE CAMPAIGN:** It is your job to guarantee the safety of people and ships in several harbours around the world. Tow the Ocean Prince into the harbour and moor it safely or inspect fishing ships near Sydney.

### 6.1.3 Rewards

As an additional bonus in the campaigns several rewards can be earned. By completing a mission you can earn extras like video footage and photographic material related to the mission!

## 6.2 MISSIONS

You carry out missions by completing certain objectives without causing damage. Missions can be easy, with just one ship to control and just a few goals. They can also be very complex, whereby you need to control multiple ships simultaneously, each with its own set of objectives.

For example there are missions whereby you need to tow a large boat into a port, using multiple small tug boats.



## 6.3 FREE ROAMING

Free roam mode allows you to sail in any of the included environments without the limitations of objectives. You can choose your own location, ship, time and weather conditions and sail around. In this mode, there are no objectives and also no ranks to be improved.

Just go wherever you want with whatever ship you prefer. If you reach the end of an environment, you can select a new environment to go to next. So you can start in Rotterdam, and end up in New York for example. You can set your own course with way points, and follow your own route.

### 6.3.1 Free roam set-up

To start a free roam session: Click on Play, and then on Free Roaming. After this, please follow the steps below.

1. Select an environment from the list and press next.
2. Select a ship from the list. A small description of the ship is given, also a 3D preview can be seen when enabled. Press next.  
*Note: the Greenpeace ships are not available for free roam sessions.*
3. Change the weather configuration options and press next.
4. Finally, set the time parameters and press play.

An example session would be: sail in San Francisco, using the Pilot boat Pioneer in bad weather at night. Or cruise around the Bora Bora lagoon with a speed boat.

### **6.3.2 Free roam start location**

After selecting an environment, a ship and adjusting the time and weather settings, you need to pick a location in the selected environment where you want to spawn.

You can select a start position in free roaming mode by clicking on one of the black ship icons. You can zoom into the chart with the mouse scroll wheel, and pan in all directions by pressing the scroll wheel down and moving the mouse. Click on the "Select start position" button below the chart.

When everything is configured, click on Start in the Free roaming menu. After some loading time, you should see your custom free roam mission.

## **6.4 MULTIPLAYER**

You can connect to one of the multiplayer servers on the Internet in environments where you see the ships of other players sailing around. You can chat with other players, and bring out towing lines to their vessels. You can line up with a few players to tow a big vessel into a small port, for example.

You can only do this when you register yourself with your unique license key on the [www.shipsim.com](http://www.shipsim.com) forum, and created a profile in the game under the Profile menu.

Enter the Hostname (IP address) and Port number of the server. Click Next. Then you enter the session, hosted by another player.

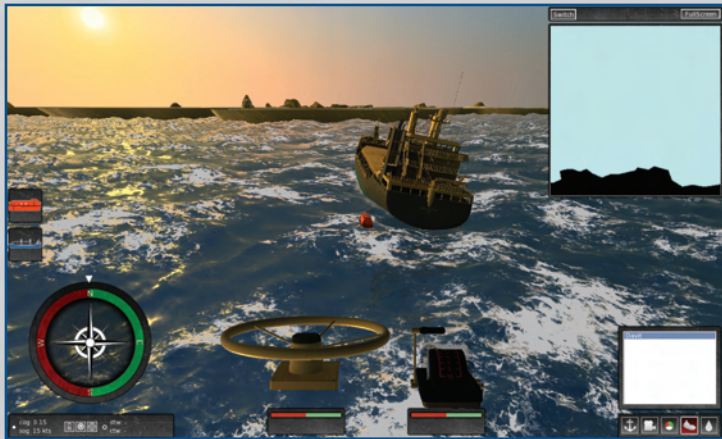
In a multiplayer session, you can sail around like in free roaming mode, and connect towing and mooring ropes to other vessels. The player that controls the ship you want to connect a towing rope to will get a connection request dialog box, which he needs to confirm before the line actually gets connected.

The chat window is still visible on the left. It can be hidden with the small arrow at its right-hand side. Other players are shown with their name on the chart, and with a small square above their vessel.

# 7. INTERFACE

## 7.1 BRIEF DESCRIPTION

Described below is a brief description of the different interface elements in the game. If you want view this yourself please start mission “Tutorial Mission”.



In the centre of the screen is the active player ship. Zoom closer to the ship with the mouse scroll wheel. Turn around the ship by pressing the right-side mouse button and dragging the mouse left and right, or up and down.

On the left there is an icon for the active player ship. There are missions with multiple player ships. Each ship will have an icon like this, and you can change between ships by clicking on these icons.

At the top left side of the screen is the objective window. For example there might be objectives for mooring, towing, disconnecting towing ropes or rescuing drowning people. Ship controls can be found at the bottom in the middle part of the screen. Click on the handles and drag the mouse up and down to set the amount of engine thrust or rudder position. Click-dragging in the area between the two handles will control both of them simultaneously. Double-click in the middle to return the controls to neutral position. The engines can also be controlled with the cursor keys up and down or the numpad keys. Depending on the ship there might be different ship overlay controls.

Chart or Radar are displayed in the top right-hand corner.

Ship tools are located in the lower right-hand corner. The ship tools consist of these items: moorage, camera's, navigation lights, deployables and water cannons.

## 7.2 CONTROLS OVERVIEW

You can steer the ship and control the engines using either the arrow keys of your keyboard, or by click-dragging the mouse over the engine handles, the steering wheel and the bow thrusters. You can steer a vessel in several ways:

### 7.2.1 Keyboard

Basic ship control can be done using a keyboard. A set of basic keyboard inputs is supplied, see chapter 7.3

### 7.2.2 Mouse (using overlay controls)

Ships can be controlled using the visual overlay controls. Hold and click the wheel for example and drag left or right and the ship rudder angle will change.



A tow control unit setup for Ship Simulator Extremes. *Left controls:* Steering wheel. *Right controls:* Engine controls. Different ships may have different overlay controls.

### 7.2.3 Joystick

A joystick or steering wheel can be mapped to different ship functions and can control ship movement.

*Note: The assignments of custom keyboard keys and joystick elements to functions can be customized using Options – Controls. This is described in more detail on the section Controls in this manual.*

## 7.3 KEYBOARD CONTROL

KEY	FUNCTION
TAB	Shows or hides all the interface elements.
1,2,3	Switch between external view, helmsman view and walkthrough mode
P OR ESC	Pause
NUMERIC 1,4,7 3,6,9	More/less throttle on the engine controls (both engine simultaneously). With the smaller ships, the engine control returns back to neutral automatically. With the larger ships, the engine control stays in position until you “push” it back with the mouse or the keys.
ARROW KEYS LEFT/RIGHT	Steer left or right. With the smaller ships, the steering returns back to neutral automatically. With the larger ships, the steering stays in position until you steer back with the mouse or the keys.
ARROW KEYS + SHIFT KEY	To set the engine throttle or the rudders in a fixed position, instead of letting them get back to neutral position when you let go of the cursor keys, you can use the shift key in combination with the cursor keys.
,	Bow thrusters steering port (left)
.	Bow thrusters starboard (right)
H	Horn
W A S D	Control water canon orientation when water canon is selected

*For the complete list of controls please check the in-game control mapping layout (Options – Controls).*

## 7.4 MOUSE FUNCTIONS

### KEY

LEFT

### FUNCTION

Click on an active object in the scene, or on a top-row icon, (player ship or waypoint) centres the viewpoint on that object.

Click-dragging the left mouse button on the engine controls will move the handle forward and backward. Doing this between the handles and they will do this both simultaneously.

Double-clicking between the engine handles will centre them back to neutral position.

Click-dragging the left mouse button on the bow thruster control left and right will activate the bow thrusters. This only works at very low boat speeds. Double-click at the bow thrusters throttle to set it back to neutral.

When a water canon is controlled hold mouse button to spray water.

RIGHT

Click-dragging the right-mouse button to rotate the viewpoint around the ship. In bridge view, this way you can look in all directions. This also works with the binocular view.

SCROLL WHEEL

Zoom in and out of the ship. Zooming in even more and you get a binocular view.

In binocular view, scrolling will zoom in and out.



## 7.5 SHIP TOOLS



In the bottom right of the screen the ship tools can be found. These ship tools have influence on items which are linked to the current ship. By using the ship tools buttons you can activate these functions. The 5 buttons are: *Moorage*, *Camera's*, *Navigation Lights*, *Deploy* and *Water cannons*.

### 7.5.1 Mooring

A ship can have different types of mooring lines connected. Use this button to moor the ship or hoist the anchor. Clicking on the Moorage icon at the bottom will display three icons: Mooring line, Tow line and Anchor.

- Clicking on *the mooring line icon* will show yellow spheres on the available mooring connection points.
- *The tow line icon* will show green spheres on the towing connection, if the ship has these.
- *The Anchor* will show a blue sphere at the front of the ship. Clicking on it will drop the anchor, which can be dangerous when you do this at full speed!



Mooring lines connection points are shown as yellow spheres.



Tow line connection points are visible as green spheres.



Anchor points are shown with a blue sphere at the bow.

Whenever a mooring, towing, or anchor line is created, red crosses are displayed. Clicking on these will remove the connection.

### 7.5.2 Camera viewpoint

Switch to a different camera on the selected ship, like for example a walkthrough camera or an orbit camera. Not all ships have the same camera's.

The standard viewpoint camera is the *External viewpoint (orbit)*, which by default floats in the air behind the ship. Using the mouse scroll wheel, you can zoom





External (orbit) viewpoint, which allows you to rotate around the ship you are steering.



Helmsman viewpoint, which puts you at the helmsman position.



Walkthrough mode, which allows you to fully explore the ship.

in and out of the ship. Pressing the right mouse button and dragging the mouse left and right will rotate the viewpoint around the ship.

There are two alternative viewpoint positions. One is *the helmsman viewpoint*, and the other is *the walkthrough viewpoint*.

In the walkthrough mode, with a hidden overlay user interface, you can still steer the ship and control the engine handles directly, using the mouse pointer over the objects on the bridge.

In walkthrough mode, you can “walk” using the cursor keys and the mouse. Just like in the other modes, pressing the right-hand mouse button and moving the mouse will change the looking and moving direction. While walking forward, pressing the Shift key will let you “run” faster.

At any point you can show or hide the user-interface overlay with the Tab key. Hiding it is probably more appropriate for the steering wheel viewpoint and the walkthrough viewpoint.

*Note: When at a ships helm, or when using a walkthrough camera, binoculars can be used. Use the scroll wheel on your mouse to zoom in and out and activate the binoculars.*

### 7.5.3 Navigation Lights

All ships have a set of navigation lights, these lights are used to show your ship's position and direction and what it is doing. You can switch to a different set to clarify in what state your ship is in.

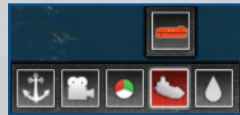
The following presets can be selected for the navigation lights:

1. Navigation lights off
2. Aground
3. Towing
4. Piloting
5. Pushing
6. Anchored
7. Moored
8. Underway



### 7.5.4 Deploy

Some ships are carrying deployable ships like lifeboats. These ships can be deployed and after deployment you can switch between the deployed ship and the original ship.



If you want to board (undeploy) a vessel, make sure you are in the range of the original vessel. Select the original ship as your current ship and press the deploy button.

### 7.5.5 Water cannons

Water cannons allow for several new challenges within different missions, such as the Greenpeace missions or rescue missions. The water cannons can be used to extinguish fire on ships or oil-rigs This can done by simply aiming the available water-cannons at the fire and spraying enough water to extinguish the fire.



Some ships are equipped with water cannons. A water cannon can be used through any perspective by use of keys on the keyboard and by using the mouse. These cannons can be turned on and off, rotated and stay locked in the status a player leaves it. This allows the player to sail the ship while still spraying.

*These keys are used to control the hose: Y=up, G=left, H=down, J=right*

## 7.6 CONNING

The conning window shows the current status of the ship. It is a simplified view of the forces which are working on the ship and the resulting force in terms of movement of the ship. The items which represent these forces are:

- Turning speed
- Sideways and forward/backwards speed
- Engine thrusts and directions
- Rudder angles
- Wind angle and force (displayed with the extra lines on the icon)
- Geographic North (N)
- COG: Course over ground
- SOG: Speed over ground
- DTW: Distance to waypoint
- CTW: Course to waypoint

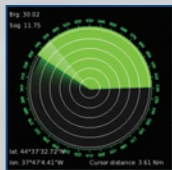


Conning settings can be changed using the buttons:

- North up
- Show compass
- Show next waypoint indicator

## 7.7 RADAR

A radar is mostly used for orientation and can also be used during limited sight (e.g. fog). It uses radio waves to visualize the surroundings of the ship. It sends out these signals and then creates a visualization by computing the reflected signals and the time it took them to return.



### 7.7.1 Radar Settings

- The setting North up changes the orientation of the radar to point North up
- The range circles display concentric circles which are centred around the ship. They are mainly used for providing a quick reference to estimate the distance to an object.

## 7.8 CHART

The chart has the option to orientate itself around the player ship direction, similar to car navigation systems, where the chart rotates around the car which stays fixed in

the centre. Normally, sea charts are orientated North-South, or North-up, and the player ship icon orientates itself according to its compass heading.



You can zoom in and out of the chart and zoom further away from the ship with the mouse scroll wheel.

A blue colour on the chart indicates a shallow area. At what depth exactly the charts becomes white is different per environment, like on the commercial sea charts of those areas. On some charts this is 10 meter, on some others 20 meter.

Grey or yellow areas indicate landmass, white or blue indicates water. Numbers indicate water depth, in meters.

The centre of the chart window indicates the position of the current player ship. The straight line shows the ship movement or orientation direction. In missions with multiple player ships, clicking on another ship icon at the top will show that ship's position centred on the chart.

Other ships, both moving ships and moored ships, are visible with ship-shaped images. Blue images indicate moving ships, and black images indicate moored ships. So in effect, the chart also has a radar function, especially useful in foggy conditions.

*Note: The chart has the option to show or hide specific objects, like the other ships or bouys.*

## 7.9 OBJECTIVES

The objective box shows your current objective. This objective is a task which must be done for completing a mission. You can have multiple objectives at a time and might receive new objectives when you complete an objective.

A default objective just shows a title, for more information about the objective click the small triangle.

When an objective is completed a remark will be shown to the right of the objective screen.



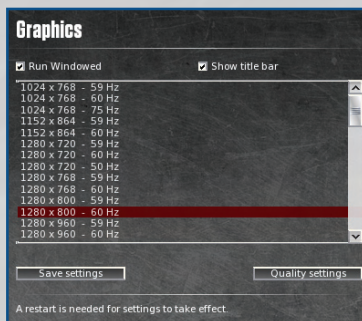
# 8. OPTIONS

There are a number of ways in which you can fine-tune the game to your preference and to your system performance. These are described in the following sections.

## 8.1 GRAPHIC SETTINGS

In the image below the dialog box is given which is used for setting the graphical features which influence the quality and performance. The graphics window itself controls the resolution and if ship simulator extremes is running windowed or full screen.

The Resolution listing gives all the available options for your graphics card. The default setting is 1024x768 pixels, which is sufficient to play the game.



By default, the game runs full screen. But you can run it in windowed mode, which makes it easier to switch to other programs without closing the game.

The quality settings button opens a new window which supplies more control over specific graphical settings.

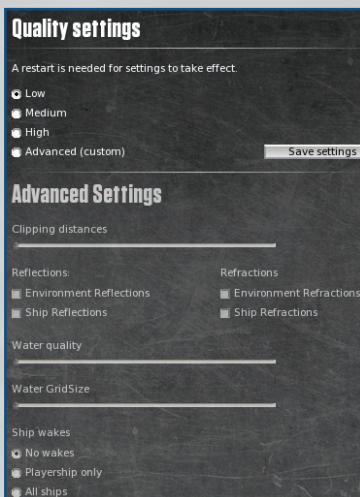
There are three basic quality settings: Low, Medium and High. If your PC specification is good enough for this game, the Low quality setting should be always usable. The Advanced options allows you to fine-tune some settings to your taste. Most of these are self-explanatory.

### 8.1.1 Advanced settings

- Clipping distances
- Reflections: Turn reflections on or off
- Refractions: Turn the refractions off (the way the light breaks beneath the water level)
- Water Quality
- Water Grid size: This is an indication of the quality of the ocean. The higher

the grid size, the better the ocean quality, but the lower the performance.

- **Ship Wakes:** The white, turbulent wake water behind a vessel looks nice, but it can take some performance. The slider lets you switch between no wakes for a fast performance, only wakes for the active player ship, and wakes for all ships around you (sometimes referred to as AI ships).
- **Particles settings:** This is used for the viewing distance of the bow waves of ships. The higher the viewing distance, the better the ocean quality, but the lower the performance.

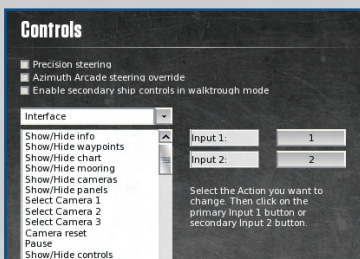


You can use a separate software program like Fraps [www.fraps.com](http://www.fraps.com) to see the performance of your system with the game, indicated with frame rate. Fraps will show the frame rate in the corner of the screen. For missions with fast boats, like the powerboat, you need a frame rate of at least 20 – 25. If you like these missions most, you may need to decrease the graphics quality settings. For larger ships, a frame rate of 13 – 15 may be enough.

## 8.2 CONTROLS

Ship Simulator Extremes has extensive functionality to customize the input controls in the game. Keyboard keys and joystick keys and sliders can be assigned to all the functions in the game.

Options to change the default controls. There are three sections, selectable with the drop-down list box at the top: Interface, Ship Controls and Camera Controls.



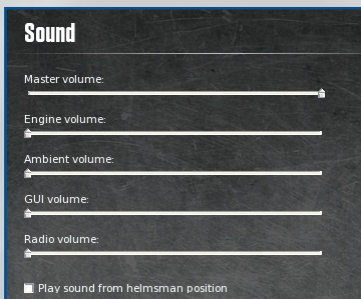
Double-clicking on each item brings up a dialog box, which asks you to press the keyboard key or joystick button that you would like to assign to that function. With the Set defaults button at the bottom, you can always return to the original settings. The option "Precision steering" allows you to set the rudders and engine speed in small increments, rather than at maximum value.

## 8.3 SOUNDS

Sound plays an important role in the game. There are four different categories of sound that can all be set separately from each other and one master volume control.

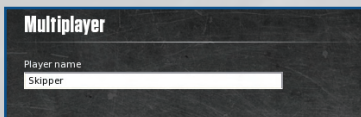
Options to change the sound volume of the game. There are four different categories of sound and one master control.

- Master volume
- Engine volume
- Ambient volume
- GUI volume
- Radio volume



## 8.4 MULTIPLAYER

Options to change the Multiplayer settings. You can add the name here with which you want to be seen in multiplayer sessions.





# 9. TROUBLESHOOTING

What follows is the troubleshooting section of the manual.

## 9.1 MINIMUM COMPUTER SPECIFICATIONS

Operating System:	Windows XP (Min. service pack 2), Windows Vista or Windows 7. 32 and 64 bits OS supported.
Processor:	3 Ghz P4 Intel or AMD equivalent processor
Graphics:	Geforce 8800GT or ATI Radeon 4850 with 256MB ram (At least Shader model 3.0)
Hard disk space:	3500 MB
Drive:	4x PC DVD-ROM
DirectX:	version 9.0c
RAM:	2GB (Windows XP) or 3GB (Vista or Windows 7)
Sound:	DirectX 9.0c compatible.
Input:	Mouse with scroll wheel and keyboard
Optional controller support:	DirectX 9.0c compatible.
Multiplayer:	Broadband Internet connection required

If your PC does not fulfill the minimum requirements, this software will not run properly, or it will run with a low performance and graphics quality. Support is not provided for PCs below the minimum specifications specified above. Some elements of your PC can be upgraded quite easily, like the memory and the graphics card, to meet the requirements.

There are general updates of the game available at the forum of [www.shipsim.com](http://www.shipsim.com).

## 9.2 QUESTIONS AND ANSWERS

Below some common questions and answers.

*Q1: During loading, the game crashes.*

**A1:** Crashes during loading the game are usually caused by a PC configuration which does not meet the required minimum specifications, or by outdated drivers for the PC graphics card, sound card, or motherboard. It can also be that the version of DirectX is too old. An easy way to find out about your PC specification and driver versions is to run a program that was installed on your PC by DirectX, called dxdiag. This is how you can run dxdiag (abbreviated name for DirectX Diagnostics):

1. Click Start
2. Click Run
3. Type DXDIAG
4. Select OK or Run, the DirectX diagnostic tool should appear now.
5. Select the “Save all information...” button at the bottom.
6. A new dialog will open up; select the location where you want to save the information.
7. Inspect the dxdiag.txt file for your hardware configuration, driver version dates, and DirectX version. If you see older driver dates than 2006, you should probably look on the corresponding vendor’s Website for a newer version. Download and install it on your PC.

Lastly, game crashes during loading can be a sound codec issue. Maybe one of your software de-installations took away a shared sound driver or other sound middle-ware component.

An example of a codec pack that might help is:

[http://codecguide.com/download\\_kl.htm](http://codecguide.com/download_kl.htm)

If you think your PC specifications is above the minimum, your DirectX version is the latest, and your drivers are all up-to-date, you can send an e-mail to support@shipsim.com where you describe your problem clearly, and attach the dxdiag.txt file, and possibly some screenshots of your problem situation.

*Q2: The game runs, but the performance is very poor.*

A2: If your PC has the minimum recommended specifications, the performance can be improved by tweaking the graphics parameters in the Settings. You can for example reduce the viewing distance, and untick the setting Environment reflections. You can also optimize the settings of your graphics card, in Windows Control Panel. Follow the instructions of the Owner’s Manual of your graphics card.

*Q3: Why should I register myself at the ShipSim.com forum with my license key?*

A3: Registering yourself with the license key will open up new key forum topics about the game and give you access to our player community and updates. Registering is also required to gain access to the multiplayer part of the game.

## **9.3 TECHNICAL SUPPORT**

### **9.3.1 Office Address**

Paradox Interactive AB. Åsögatan 108, 11th floor, 118 29 Stockholm, Sweden.

### **9.3.2 Activation Code**

Please consider registering your game, using the activation code. This gives you easy access to our tech support forums and various other useful discussion forums about the game: <http://forum.paradoxplaza.com>

### **9.3.3 Customer Support**

Paradox Interactive offers many levels of service for our customers and members. To get the best help possible please visit below about our services and what best fits your issue.

[www.paradoxplaza.com/support](http://www.paradoxplaza.com/support)

When contacting us, be sure to include:

- A brief description of the problem.
- The hardware configuration of your computer. Attach the dxdiag.txt file that results from running dxdiag (see section Troubleshooting for instructions).
- Information on the circumstances, under which the error occurred.
- A screenshot or video of the situation where the problem occurs. You can use a software program like Fraps ([www.fraps.com](http://www.fraps.com)) for this. The resulting videos should be made smaller using for example Microsoft Media Encoder or DivX.

Also when you encounter a software problem when installing or running the simulation and the particular problem could not be found in this manual, make sure you have updated your computer with the latest audio or video drivers.

# 10. EPILEPSY WARNING

## WARNING READ BEFORE USING YOUR VIDEO GAME SYSTEM READ THIS NOTICE BEFORE YOU OR YOUR CHILD PLAYS ANY COMPUTER GAME

A very small percentage of individuals have a condition which may cause them to experience epileptic seizures or have momentary loss of consciousness when viewing certain kinds of flashing lights or patterns that are commonly present in our daily environment. These persons may experience seizures while watching some kinds of television pictures or playing certain computer games. Players who have not had any previous seizures may nonetheless have an undetected epileptic condition. If you or anyone in your family has experienced symptoms linked to an epileptic condition (e.g. a seizure or loss of awareness), immediately consult your physician before playing any computer games.

We recommend that parents observe their children while they play computer games. If you or your child experience any of the following symptoms: dizziness, altered vision, eye or muscle twitching, involuntary movements, loss of awareness, disorientation, or convulsions, discontinue immediately and consult your physician before resuming play.

## FOLLOW THESE PRECAUTIONS WHENEVER USING COMPUTER GAMES

- When playing computer games, do not sit or stand too close to the monitor. Play as far back from the screen as possible.
- Play computer games on the smallest available monitor.
- Do not play if you are tired or need sleep.
- Always play in a well-lit room.
- Be sure to take a 10 to 15 minute break every hour while playing.

## REPETITIVE STRAIN WARNING

Some people may experience fatigue or discomfort after playing for a long time. Regardless of how you feel, you should ALWAYS take a 10 to 15 minute break every hour while playing. If your hands or arms become tired or uncomfortable while playing, stop and rest. If you continue to experience soreness or discomfort during or after play, listen to the signals your body is giving you. Stop playing and consult a doctor. Failure to do so could result in long term injury. If your hands, wrist or arms have been injured or strained in other activities, use of your system could aggravate the condition. Before playing, consult a doctor.

# 11. LICENSE AGREEMENT

## LIMITED SOFTWARE AND WARRANTY LICENSE AGREEMENT

SHIP SIMULATOR EXTREMES

**IMPORTANT - READ CAREFULLY:** THE ACCOMPANYING PROGRAM (WHICH INCLUDES COMPUTER SOFTWARE PROGRAM, THE MEDIA AND RELATED DOCUMENTATION IN PRINTED OR ELECTRONIC FORM) IS LICENSED TO YOU ON THE TERMS SET FORTH BELOW, WHICH CONSTITUTES A LEGAL AGREEMENT BETWEEN YOU AND VSTEP BV ("Owner"). BY OPENING THIS PACKAGE, AND/OR INSTALLING OR OTHERWISE USING THE PROGRAM, YOU AGREE TO BE LEGALLY BOUND BY THE TERMS OF THIS AGREEMENT WITH Owner. IF YOU DO NOT AGREE TO THE TERMS OF THIS AGREEMENT, OR YOU ARE NOT AUTHORIZED TO USE THE PROGRAM YOU SHOULD RETURN THE PROGRAM TO THE VENDOR FROM WHICH YOU OBTAINED THE PROGRAM AND REQUEST A REFUND.

This program is protected by the copyright laws of The Netherlands, international copyright treaties and conventions and other laws. The Program is licensed, and not sold, and this Agreement confers no title or ownership to the Program or any copy thereof.

1. Limited Use License. Owner grants you the non-exclusive, non-transferable, limited right and license to use one copy of the Program solely for your personal use on a single computer.
2. Ownership. All intellectual property rights in and to the Program (including but not limited to video, audio and other content incorporated therein) and title to any and all copies thereof are owned by Owner or its licensors, and you receive no right or interest therein other than the limited license in paragraph 1 hereof.

### YOU SHALL NOT:

- Copy the Program except a single backup copy.
- Sell, rent, lease, license, distribute or otherwise transfer or make available to any other person the Program, in whole or in part, or use the Program or any part thereof in any commercial context, including but not limited in a service bureau, "cyber or Internet cafe", computer gaming center or any other commercial location in which multiple users may access the Program. Owner may offer a separate Site License Agreement to permit you to make the Program available for commercial use; see the contact information below.
- Reverse engineer, derive source code, modify, decompile, disassemble, translate, or create derivative works of the Program, in whole or in part.
- Remove, disable or circumvent any proprietary notices or labels contained on or within the Program.
- Export or re-export the Program or any copy or adaptation in violation of any applicable U.S. export restrictions or other laws or regulations.

**LIMITED WARRANTY.** Publisher warrants to the original consumer licensor of the Program that the recording medium on which the Program is recorded will be free from defects in material and workmanship for 90 days from the date of purchase. If the recording medium of a product is found defective within 90 days of original purchase, Publisher agrees to replace, free of charge, such product within such period upon its receipt of the Product, postage paid, with proof of the date of purchase, as long as the Program is still being manufactured by Owner. In the event that the Program is no longer available, Publisher retains the right to substitute a similar program of equal or greater value. This warranty is limited to the recording medium containing the Program as originally provided by Publisher and is not applicable and shall be void if the defect has arisen through abuse, mistreatment, or neglect. Any implied warranties prescribed by statute are expressly limited to the 90-day period described above.

**EXCEPT AS SET FORTH ABOVE, THIS WARRANTY IS IN LIEU OF ALL OTHER WARRANTIES, WHETHER ORAL OR WRITTEN, EXPRESS OR IMPLIED, INCLUDING ANY WARRANTY OF MERCHANTABILITY, SATISFACTORY QUALITY, FITNESS FOR A PARTICULAR PURPOSE OR NON-INFRINGEMENT, AND NO OTHER REPRESENTATIONS OR CLAIMS OF ANY KIND SHALL BE BINDING ON OR OBLIGATE Owner.**

When returning the Program for warranty replacement please send the original product disk only in protective packaging and include: (1) a photocopy of your dated sales receipt; (2) your name and return address typed or clearly printed; (3) a brief note describing the defect, the problem(s) you encountered and the system on which you are running the Program.

### LIMITATION ON DAMAGES.

**IN NO EVENT WILL Owner BE LIABLE FOR SPECIAL, INCIDENTAL OR CONSEQUENTIAL DAMAGES RESULTING FROM POSSESSION, USE OR MALFUNCTION OF THE PROGRAM, INCLUDING DAMAGES TO PROPERTY, LOSS OF GOODWILL, COMPUTER FAILURE OR MALFUNCTION AND, TO THE EXTENT PERMITTED BY LAW, DAMAGES FOR PERSONAL INJURIES, EVEN IF Owner HAS BEEN ADVISED OF THE POSSIBILITY OF SUCH DAMAGES. Owner LIABILITY SHALL NOT EXCEED THE**

**ACTUAL PRICE PAID FOR THE LICENSE TO USE THIS PROGRAM. SOME STATES/COUNTRIES DO NOT ALLOW LIMITATIONS ON HOW LONG AN IMPLIED WARRANTY LASTS AND/OR THE EXCLUSION OR LIMITATION OF INCIDENTAL OR CONSEQUENTIAL DAMAGES, SO THE ABOVE LIMITATIONS AND/OR EXCLUSION OR LIMITATION OF LIABILITY MAY NOT APPLY TO YOU. THIS WARRANTY GIVES YOU SPECIFIC LEGAL RIGHTS, AND YOU MAY HAVE OTHER RIGHTS WHICH VARY FROM JURISDICTION TO JURISDICTION.**

**TERMINATION.** Without prejudice to any other rights of Owner, this Agreement will terminate automatically if you fail to comply with its terms and conditions. In such event, you must destroy all copies of the Program and all of its component parts.

**INJUNCTION.** Because Owner would be irreparably damaged if the terms of this Agreement were not specifically enforced, you agree that Owner shall be entitled, without bond, other security or proof of damages, to appropriate equitable remedies with respect to breaches of this Agreement, in addition to such other remedies as Owner may otherwise have under applicable laws.

**INDEMNITY.** You agree to indemnify, defend and hold Owner, its partners, publishers, distributors, affiliates, contractors, officers, directors, employees and agents harmless from all damages, losses and expenses arising directly or indirectly from your acts and omissions to act in using the Program pursuant to the terms of this Agreement.

**MISCELLANEOUS.** For authorized use of software You must possess a rightfully obtained License Key. Except as expressly authorized by this Agreement, You shall not make available the Software, Accompanying materials, or any License Key to any third party. You will use your best efforts to cooperate with and assist the Owner in identifying and preventing any unauthorized use, copying, or disclosure of the Software, Accompanying materials, or any portion thereof.

This software is for entertainment purposes only. The software must not be used as a training tool.

Use of this software or any part of it to transfer data to other third party software is prohibited without the written permission of Owner.

The Owner maintains the right to block or otherwise disable License Keys if they are considered to be distributed over the Internet or otherwise obtained illegally.

The system requirements for this game are based on version 1.0 of the game. Installing patches may influence the minimum system requirements.

The Owner may drop support for a problem, when the problem has been fixed in a patch.

This Agreement represents the complete agreement concerning this license between the parties and supersedes all prior agreements and representations between them. It may be amended only by a writing executed by both parties. If any provision of this Agreement is held to be unenforceable for any reason, such provision shall be reformed only to the extent necessary to make it enforceable and the remaining provisions of this Agreement shall not be affected. This Agreement shall be governed by and construed in accordance with the laws of The Netherlands and you consent to the exclusive jurisdiction of the Dutch courts.

The Program utilizes THE FOLLOWING THIRD PARTY LIBRARIES:



Portions of this software utilize RakNet 3.0 networking software (©2008 Jenkins Software LLC). RakNet is a trademark of Jenkins Software LLC. All rights reserved.

Portions of this software utilize FreeType libraries (©2006 The FreeType Project ([www.freetype.org](http://www.freetype.org))). All rights reserved.

Portions of this software utilize Zlib library (Copyright © 1995-2004 Jean-loup Gailly and Mark Adler)

## PhysX<sup>™</sup> NVIDIA CORPORATION by NVIDIA NVIDIA<sup>®</sup> PhysX<sup>™</sup> DRIVER END USER LICENSE AGREEMENT

This End User License Agreement (the "Agreement") is a legal agreement between you (either individually or an entity) ("You" or "Your") and NVIDIA Corporation ("NVIDIA") regarding the use of the NVIDIA<sup>®</sup> PhysX<sup>™</sup> Driver and any accompanying documentation (collectively, the "Software").

YOU MUST READ AND AGREE TO THE TERMS OF THIS AGREEMENT BEFORE ANY SOFTWARE CAN BE DOWNLOADED OR INSTALLED OR USED. BY CLICKING ON THE "AGREE" BUTTON OF THIS AGREEMENT, OR INSTALLING SOFTWARE, OR USING SOFTWARE, YOU ARE AGREEING TO BE BOUND BY THE TERMS AND CONDITIONS OF THIS AGREEMENT. IF YOU DO NOT AGREE WITH THE TERMS AND CONDITIONS OF THIS AGREEMENT, THEN YOU SHOULD EXIT THIS PAGE, NOT INSTALL OR USE ANY SOFTWARE, AND DESTROY ALL COPIES OF THE SOFTWARE THAT YOU HAVE DOWNLOADED. BY DOING SO YOU FOREGO ANY IMPLIED OR STATED RIGHTS TO DOWNLOAD OR INSTALL OR USE SOFTWARE.

NVIDIA MAY MODIFY THE TERMS OF THIS AGREEMENT FROM TIME TO TIME. ANY USE OF THE PHYSX SDK WILL BE SUBJECT TO SUCH UPDATED TERMS. A CURRENT VERSION OF THIS AGREEMENT IS POSTED ON NVIDIA'S DEVELOPER WEBSITE: [www.developer.nvidia.com/object/physx\\_eula.html](http://www.developer.nvidia.com/object/physx_eula.html)

This license is only granted to and only may be used by You. NVIDIA grants You a limited, non-exclusive, non-transferable license to use the provided Software for evaluation, testing and non-commercial production purposes according to the terms set forth below:

### 1. Use of the Software.

*a. You may use, display and reproduce the NVIDIA PhysX Driver on Licensed Platforms only. For purposes of this Agreement, Licensed Platforms shall include the following:*

- Any PC or Apple Mac computer with a NVIDIA CUDA-enabled processor executing NVIDIA PhysX;
- Any PC or Apple Mac computer running NVIDIA PhysX software executing on the primary central processing unit of the PC only;
- Any PC utilizing an AGEIA PhysX processor executing NVIDIA PhysX code;
- Microsoft XBOX 360<sup>™</sup>
- Nintendo<sup>®</sup> Wii<sup>™</sup> and/or
- Sony Playstation<sup>®</sup>

*b. You may not and shall not permit others to:*

- (i) modify, translate, reverse engineer, decompile, decrypt, disassemble or otherwise attempt to defeat, avoid, bypass, remove, deactivate or otherwise circumvent any software protection mechanisms in the Software, including without limitation any such mechanism used to restrict or control the functionality of the Software, or to derive the source code or the underlying ideas, algorithms, structure or organization from the Software;
- (ii) alter, adapt, modify or translate the Software in any way for any purpose, including without limitation error correction;
- (iii) distribute, rent, loan, lease, transfer or grant any rights in the Software or modifications thereof in any form to any person without the prior written consent of NVIDIA.

*c. No Commercial Distribution Right. This license grants no rights to distribute the Software for any commercial purposes. Any and all individuals, companies, non-academic government agencies or other organizations wishing to re-distribute the Software for any purpose must enter into written contract with NVIDIA. Please contact [PhysXlicensing@NVIDIA.com](mailto:PhysXlicensing@NVIDIA.com) for further information.*

**2. Ownership.** This license is not a sale. Title, copyrights and all other rights to the Software and any copy made by You remain with NVIDIA and its suppliers and licensors. Unauthorized copying of the Software, or failure to comply with the license restrictions set forth in Section 1(b) above, will result in automatic termination of this license and will make available to NVIDIA other legal remedies.

**3. Termination.** This license is effective once You click the "AGREE" button of this Agreement, or install or use the Software, and will continue until terminated. Unauthorized copying of the Software, Your failure to comply with the above restrictions or Your failure to comply with any terms of this Agreement will result in automatic termination of this Agreement and will make available to NVIDIA other legal remedies. Upon termination of this license for any reason You will destroy all copies of the Software. Any use of the Software after termination is unlawful. Upon termination of this Agreement, all rights granted to You in this Agreement shall immediately terminate. NVIDIA's rights and Your obligations under this Agreement shall survive any termination of this Agreement.

**4. Trademarks.** Certain of the product names used in this Agreement and the Software constitute trademarks, trade names, trade dress, or service marks ("Trademarks") of NVIDIA or other third parties. You are not authorized to use any such Trademarks for any purpose.

**5. No Warranty.** THE SOFTWARE IS BEING DELIVERED TO YOU "AS IS" AND NVIDIA MAKES NO WARRANTIES WHATSOEVER WITH RESPECT TO THE SOFTWARE. NVIDIA AND ITS SUPPLIERS AND LICENSORS MAKE AND YOU RECEIVE NO OTHER WARRANTIES OR CONDITIONS, EXPRESS, IMPLIED, STATUTORY OR OTHERWISE OR IN ANY COMMUNICATION WITH YOU, AND NVIDIA AND ITS SUPPLIERS AND LICENSORS SPECIFICALLY DISCLAIM ANY IMPLIED WARRANTY OF MERCHANTABILITY, SATISFACTORY QUALITY, FITNESS FOR A PARTICULAR PURPOSE OR NON-INFRINGEMENT AND THEIR EQUIVALENTS. NVIDIA does not warrant that the operation of the Software will be uninterrupted or error free or that the Software will meet Your specific requirements.

SOME STATES OR OTHER JURISDICTIONS DO NOT ALLOW THE EXCLUSION OF IMPLIED WARRANTIES, SO THE ABOVE EXCLUSIONS MAY NOT APPLY TO YOU. YOU MAY ALSO HAVE OTHER RIGHTS THAT VARY FROM STATE TO STATE AND JURISDICTION TO JURISDICTION.

**6. Limitation of Liability.** IN NO EVENT WILL NVIDIA, ITS SUPPLIERS OR ITS LICENSORS BE LIABLE FOR LOSS OF OR CORRUPTION TO DATA, LOST PROFITS OR LOSS OF CONTRACTS, COST OF PROCUREMENT OF SUBSTITUTE PRODUCTS OR OTHER SPECIAL, INCIDENTAL, PUNITIVE, CONSEQUENTIAL OR INDIRECT DAMAGES, LOSSES, COSTS OR EXPENSES OF ANY KIND ARISING FROM THE SUPPLY OR USE OF THE SOFTWARE, HOWEVER CAUSED AND ON ANY THEORY OF LIABILITY (INCLUDING WITHOUT LIMITATION NEGLIGENCE). THIS LIMITATION WILL APPLY EVEN IF NVIDIA OR AN AUTHORIZED DISTRIBUTOR HAS BEEN ADVISED OF THE POSSIBILITY OF SUCH DAMAGES AND NOTWITHSTANDING THE FAILURE OF ESSENTIAL PURPOSE OF ANY LIMITED REMEDY EXCEPT TO THE EXTENT THAT LIABILITY MAY NOT BY LAW BE LIMITED OR EXCLUDED. YOU ACKNOWLEDGE THAT THE LACK OF A REQUIRED PAYMENT BY YOU FOR THE SOFTWARE REFLECT THIS ALLOCATION OF RISK.

SOME STATES OR OTHER JURISDICTIONS DO NOT ALLOW THE EXCLUSION OR LIMITATION OF LIABILITY FOR INCIDENTAL OR CONSEQUENTIAL DAMAGES, SO THE ABOVE LIMITATIONS AND EXCLUSIONS MAY NOT APPLY TO YOU.

**7. Indemnity.** You agree to indemnify and hold NVIDIA, its successors, assigns, subsidiaries, affiliates, officers, directors, agents, and employees harmless from any claim or demand, including reasonable attorneys' fees, made by any third party due to or arising out of Your failure to comply with this Agreement or Your violation of any law or the rights of any third party.

**8. Legal Compliance.** You agree that You shall fully comply with all applicable laws, statutes, ordinances and regulations regarding Your use of the Software.

**9. Governing Law and General Provisions.** This Agreement shall not be governed by the 1980 U.N. Convention on Contracts for the International Sale of Goods; rather, this Agreement and the performance of the parties hereunder shall be construed in accordance with and governed by the laws of the State of California, U.S.A., except for its conflict of law rules. The exclusive jurisdiction and venue of any action arising out of or related to this Agreement will be either the state or federal courts in Santa Clara County, California, U.S.A., and the parties agree and submit to the personal and exclusive jurisdiction and venue of these courts. This Agreement is the entire agreement between You and NVIDIA and supersedes any other communications, representations or advertising with respect to the Software. If any provision of this Agreement is held invalid or unenforceable, such provision shall be revised to the extent necessary to cure the invalidity or unenforceability, and the remainder of the Agreement shall continue in full force and effect. Failure to prosecute a party's rights with respect to a default hereunder will not constitute a waiver of the right to enforce rights with respect to the same or any other breach. If You are acquiring the Software on behalf of any part of the U.S. Government, the following provisions apply. The Software programs and documentation are deemed to be "Commercial computer software" and "Commercial computer software documentation" respectively, pursuant to DFAR Section 227.7202 and FAR 12.212(b), as applicable. Any use, modification, reproduction, release, performance, display or disclosure



of the Software programs and/or documentation by the U.S. Government or any of its agencies shall be governed solely by the terms of this Agreement and shall be prohibited except to the extent expressly permitted by the terms of this Agreement. Any technical data provided that is not covered by the above provisions is deemed to be "Technical data-commercial items" pursuant to DFAR Section 227.7015(a). Any use, modification, reproduction, release, performance, display or disclosure of such technical data shall be governed by the terms of DFAR Section 227.7015(b).

**10. Questions.** Should You have any questions relating to this Agreement, or if You desire to contact NVIDIA for any reason, please contact [PhysXlicensing@NVIDIA.com](mailto:PhysXlicensing@NVIDIA.com).

NVIDIA PhysX, Copyright © 2008 NVIDIA Corporation. All rights reserved. AGEIA PhysX, Copyright © 2002-2008 AGEIA Technologies, Inc. All rights reserved. Novodex Physics SDK, Copyright © 2001-2006 NovodeX. All rights reserved.  
<http://www.NVIDIA.com>

---

Following text only applies to the CEGUI license:

**CEGUI, Copyright © 2004 - 2009 Paul D Turner & The CEGUI Development Team**

Permission is hereby granted, free of charge, to any person obtaining a copy of this software and associated documentation files (the "Software"), to deal in the Software without restriction, including without limitation the rights to use, copy, modify, merge, publish, distribute, sublicense, and/or sell copies of the Software, and to permit persons to whom the Software is furnished to do so, subject to the following conditions:

The above copyright notice and this permission notice shall be included in all copies or substantial portions of the Software.

THE SOFTWARE IS PROVIDED "AS IS", WITHOUT WARRANTY OF ANY KIND, EXPRESS OR IMPLIED, INCLUDING BUT NOT LIMITED TO THE WARRANTIES OF MERCHANTABILITY, FITNESS FOR A PARTICULAR PURPOSE AND NONINFRINGEMENT. IN NO EVENT SHALL THE AUTHORS OR COPYRIGHT HOLDERS BE LIABLE FOR ANY CLAIM, DAMAGES OR OTHER LIABILITY, WHETHER IN AN ACTION OF CONTRACT, TORT OR OTHERWISE, ARISING FROM, OUT OF OR IN CONNECTION WITH THE SOFTWARE OR THE USE OR OTHER DEALINGS IN THE SOFTWARE.

---

Following text only applies to the Expat license:

**Expat, Copyright © 1998, 1999, 2000 Thai Open Source Software Center Ltd and Clark Cooper**

**Copyright © 2001, 2002, 2003, 2004, 2005, 2006 Expat maintainers.**

Permission is hereby granted, free of charge, to any person obtaining a copy of this software and associated documentation files (the "Software"), to deal in the Software without restriction, including without limitation the rights to use, copy, modify, merge, publish, distribute, sublicense, and/or sell copies of the Software, and to permit persons to whom the Software is furnished to do so, subject to the following conditions:

The above copyright notice and this permission notice shall be included in all copies or substantial portions of the Software.

THE SOFTWARE IS PROVIDED "AS IS", WITHOUT WARRANTY OF ANY KIND, EXPRESS OR IMPLIED, INCLUDING BUT NOT LIMITED TO THE WARRANTIES OF MERCHANTABILITY, FITNESS FOR A PARTICULAR PURPOSE AND NONINFRINGEMENT. IN NO EVENT SHALL THE AUTHORS OR COPYRIGHT HOLDERS BE LIABLE FOR ANY CLAIM, DAMAGES OR OTHER LIABILITY, WHETHER IN AN ACTION OF CONTRACT, TORT OR OTHERWISE, ARISING FROM, OUT OF OR IN CONNECTION WITH THE SOFTWARE OR THE USE OR OTHER DEALINGS IN THE SOFTWARE.

---

Following text only applies to the Lua license:

**Lua, License for Lua 5.0 and later versions Copyright © 1994–2008 Lua.org, PUC-Rio.**

Permission is hereby granted, free of charge, to any person obtaining a copy of this software and associated documentation files (the "Software"), to deal in the Software without restriction, including without limitation the rights to use, copy, modify, merge, publish, distribute, sublicense, and/or sell copies of the Software, and to permit persons to whom the Software is furnished to do so, subject to the following conditions:

The above copyright notice and this permission notice shall be included in all copies or substantial portions of the Software.

THE SOFTWARE IS PROVIDED "AS IS", WITHOUT WARRANTY OF ANY KIND, EXPRESS OR IMPLIED, INCLUDING BUT NOT LIMITED TO THE WARRANTIES OF MERCHANTABILITY, FITNESS FOR A PARTICULAR PURPOSE AND NONINFRINGEMENT. IN NO EVENT SHALL THE AUTHORS OR COPYRIGHT HOLDERS BE LIABLE FOR ANY CLAIM, DAMAGES OR OTHER LIABILITY, WHETHER IN AN

ACTION OF CONTRACT, TORT OR OTHERWISE, ARISING FROM, OUT OF OR IN CONNECTION WITH THE SOFTWARE OR THE USE OR OTHER DEALINGS IN THE SOFTWARE.

Following text only applies to the Tolu++ license:

Tolu++, Copyright © 2009 Ariel Manzur.

Permission is hereby granted, free of charge, to any person obtaining a copy of this software and associated documentation files (the "Software"), to deal in the Software without restriction, including without limitation the rights to use, copy, modify, merge, publish, distribute, sublicense, and/or sell copies of the Software, and to permit persons to whom the Software is furnished to do so, subject to the following conditions:

The above copyright notice and this permission notice shall be included in all copies or substantial portions of the Software. THE SOFTWARE IS PROVIDED "AS IS", WITHOUT WARRANTY OF ANY KIND, EXPRESS OR IMPLIED, INCLUDING BUT NOT LIMITED TO THE WARRANTIES OF MERCHANTABILITY, FITNESS FOR A PARTICULAR PURPOSE AND NONINFRINGEMENT. IN NO EVENT SHALL THE AUTHORS OR COPYRIGHT HOLDERS BE LIABLE FOR ANY CLAIM, DAMAGES OR OTHER LIABILITY, WHETHER IN AN ACTION OF CONTRACT, TORT OR OTHERWISE, ARISING FROM, OUT OF OR IN CONNECTION WITH THE SOFTWARE OR THE USE OR OTHER DEALINGS IN THE SOFTWARE.

---

Following text only applies to the Vorbis license:

Vorbis, Copyright © 2002-2008 Xiph.org Foundation

Redistribution and use in source and binary forms, with or without modification, are permitted provided that the following conditions are met:

- Redistributions of source code must retain the above copyright notice, this list of conditions and the following disclaimer.
- Redistributions in binary form must reproduce the above copyright notice, this list of conditions and the following disclaimer in the documentation and/or other materials provided with the distribution.
- Neither the name of the Xiph.org Foundation nor the names of its contributors may be used to endorse or promote products derived from this software without specific prior written permission.

THIS SOFTWARE IS PROVIDED BY THE COPYRIGHT HOLDERS AND CONTRIBUTORS "AS IS" AND ANY EXPRESS OR IMPLIED WARRANTIES, INCLUDING, BUT NOT LIMITED TO, THE IMPLIED WARRANTIES OF MERCHANTABILITY AND FITNESS FOR A PARTICULAR PURPOSE ARE DISCLAIMED. IN NO EVENT SHALL THE FOUNDATION OR CONTRIBUTORS BE LIABLE FOR ANY DIRECT, INDIRECT, INCIDENTAL, SPECIAL, EXEMPLARY, OR CONSEQUENTIAL DAMAGES (INCLUDING, BUT NOT LIMITED TO, PROCUREMENT OF SUBSTITUTE GOODS OR SERVICES; LOSS OF USE, DATA, OR PROFITS; OR BUSINESS INTERRUPTION) HOWEVER CAUSED AND ON ANY THEORY OF LIABILITY, WHETHER IN CONTRACT, STRICT LIABILITY, OR TORT (INCLUDING NEGLIGENCE OR OTHERWISE) ARISING IN ANY WAY OUT OF THE USE OF THIS SOFTWARE, EVEN IF ADVISED OF THE POSSIBILITY OF SUCH DAMAGE.

---

If you have any questions concerning the SHIP SIMULATOR EXTREMES license agreement, you may contact us at:

VSTEP BV  
The Netherlands

Email: [info@shipsim.com](mailto:info@shipsim.com)  
Please visit our website: [www.shipsim.com](http://www.shipsim.com)

# 12. CREDITS

## VSTEP BV

### PROGRAMMING

Martijn Proost  
Marcin Sarnowicz  
Markus Hötzing  
Guido Koolhaas  
Sander de Putter  
Rik de Leeuw  
Joost van Ooijen  
Hakim Boukellif  
Paul Bouchaut  
Thomas Elschot  
Maarten Meulemans  
Maarten van der Bijl  
Matthijs van der Meide  
Wouter Swennenhuis  
Rob van Bellen  
Astrid Boers  
Willem van den Esker  
Ratna Agung  
Menno Kuyper  
Bengt van Veelen

### GAME DESIGN

Daniel van der Meulen

Thomas Papa  
Ralph Voorips

### MISSION CREATION

Wouter Swennenhuis  
Robin Brockötter  
Maykel Boes

### WEB

Paul Kievits  
Mark Nolen

### ART

Ben Borrie  
Kenny Wood  
Jeffrey Dronkers  
Adri Vriens  
Maran van Brakel  
Vikash Khedoe  
Satheesh Nair  
Vikram.V  
Ramon Vialle  
Davy Casteleins  
Martijn Kruit

Jeroen Horsman

Maykel Boes  
Robin Brockötter  
Simon Richardson

### VIDEO EDITING

Anne-Marie van Noortwijk

### SOUND DESIGN

Ratna Agung  
Wouter Swennenhuis

### MANAGEMENT

Martijn Proost  
Pjotr van Schothorst  
Sebastiaan Otten  
Frank Dolmans  
Cristijn Sarvaas

### TESTING

Sergiu Julinschi  
Specialisterren

## **SPECIAL THANKS TO:**

Greenpeace:  
Pete Wilcox  
Anita Lee  
Brian Fitzgerald

Crazy Eddy  
Nicky Vendrig  
Quadsoftware (Grome)  
Bo Zolland  
www.viztech.se  
Act-3D  
www.quest3d.com

KNRM  
www.knrm.nl

Studio Yacht  
www.studioyacht.nl

Fairmount Marine B.V.  
www.fairmount.nl

PO Ferries Holdings Ltd  
www.poferries.com

Red Funnel Group Ltd  
www.redfunnel.co.uk

Zeehaven Politie  
Rotterdam Rijnmond  
The Rotterdam-Rijnmond  
Seaport Polic

Port of Rotterdam  
www.portofrotterdam.com

Ocean Rig  
www.ocean-rig.com

Hovertravel Ltd  
www.hovertravel.co.uk

Bugsier-, Reederei- und  
Bergungsgesellschaft  
mbH Co. KG  
www.bugsier.de

Huibert Groenendijk  
www.huibertgroenendijk.  
com

Bionatics  
www.bionatics.com

Jumbo Shipping  
www.jumboshipping.com

Alexander Kulagin  
Alfredo Hernandez  
Perezgomez  
Michael Brinkmann  
Steffen Haubner  
Jan de Haan  
Marc Reynaert  
Jacob Grønnegaard

Luc Bodet  
Fred Toebes  
Tore J Kristiansen  
Johan Machielsen  
Martin Smith  
Eric Huntingford  
Angus Dunn  
Terry Russell  
Egbert Sipma  
James Darling  
Denis Carre  
Diana Frausin  
Juan José Relafío Laura  
Mark James  
www.famfamfam.com

Portions of this software  
utilize RakNet 3.0  
networking software  
(©2008 Jenkins  
Software LLC).  
RakNet is a trademark  
of Jenkins Software LLC,  
All rights reserved.

Picture Golden gate by  
night © Albo  
Fotolia.com

Picture lady liberty ©  
Robin Gillett  
Fotolia.com

## **PARADOX INTERACTIVE**

### CEO

Fredrik Wester

### PR & MARKETING

Shams Jorjani

### EDITOR

Digital Wordsmithing/  
Ryan Newman

### EVP DEVELOPMENT

Johan Andersson

### SALES ASSISTANT

Andrew Taranto

### LOCALIZATION

S&H Entertainment  
Localization

### EVP SALES

Reena M Miranda

### COMMUNITY MANAGER

Linda Kiby

### COVER ART

Ronnie Olsthoorn

### EVP PUBLISHING

Susana Meza

### FINANCE & ACCOUNTING

Emilia Hanssen

### PACKSHOTS

Martin Doersam

### CFO

Lena Blomberg

### PACKAGING LAYOUT

Magnus Malmberg

### PRODUCT MANAGER

Boel Bermann

### MANUAL LAYOUT

Retrographic

### EXECUTIVE PRODUCER

Mattias Lilja

### MARKETING ASSETS

Mick Pollaci

Thanks to all our partners' worldwide, in particular long-term partners and last, but not least, a special thanks to all forum members, operation partners and supporters, who are integral for our success.

This simulator game is a work of fiction. The names, characters, vessels and most incidents portrayed in it are the work of the developer's imagination. Any resemblance to actual persons, living or dead, events, or localities is entirely coincidental. Ship Simulator, Ship Simulator Extremes and the Ship Simulator Extremes logo are trademarks of VSTEP. All Rights Reserved.

Microsoft and Windows XP, Vista and Windows 7 are registered trademarks of Microsoft Corporation. All other trademarks and trade names are properties of their respective owners.

OTHER GREAT GAMES BY PARADOX

# HEARTS OF IRON II DOOMSDAY



**WORLD  
DOMINATION  
1936 - 1953**



[www.heartsofirongame.com](http://www.heartsofirongame.com)



OTHER GREAT GAMES BY PARADOX

# TRAINZ™

*The Complete Collection*



EVERYONE  
E  
CONTENT RATED BY  
ESRB

Search for more  
detailed rating  
summaries at  
[www.esrb.org](http://www.esrb.org)

[www.auran.com/trainz](http://www.auran.com/trainz)



OTHER GREAT GAMES BY PARADOX

# The Medieval Strategy Game CRUSADER KINGS™

94/100

Netjak

90/100

1UP

86/100

Worth Playing

85/100

GameChronicles

82/100

Gamespot



Violence

[www.facebook.com/Crusaderkings](http://www.facebook.com/Crusaderkings)





OTHER GREAT GAMES BY PARADOX

THE GRAND STRATEGY GAME

# EUROPA UNIVERSALIS III



EVERYONE

**E**

CONTENT RATED BY  
ESRB

Alcohol Reference  
Tobacco Reference  
Mild Violence

[www.europauniversalis3.com](http://www.europauniversalis3.com)



paradox  
INTERACTIVE

## CUSTOMER SUPPORT

Paradox Interactive offers many levels of service for our customers and members. To get the best help possible please visit below about our services and what best fits your issue.

[www.paradoxplaza.com/support](http://www.paradoxplaza.com/support)

## OFFICE ADDRESS

Paradox Interactive AB. Åsögatan 108, 11th floor, 118 29 Stockholm, Sweden.

## ABOUT PARADOX INTERACTIVE

Since 1999, Paradox Interactive has been a leading global developer and publisher of PC-based strategy games. World-renowned for its strategy catalog, the company holds a particularly strong presence in the United States and Europe. Its steadily-growing portfolio includes originally developed titles such as the critically acclaimed Europa Universalis and the Hearts of Iron franchises, as well as publishing titles such as the Penumbra series, Elven Legacy, Lead&Gold, Mount&Blade Warband and Majesty 2 – The Fantasy Kingdom Sim. For more information, please visit [www.paradoxplaza.com](http://www.paradoxplaza.com) and follow @pdxinteractive on Twitter.

Our offices are located in New York, USA and Stockholm, Sweden. We work with renowned distributors world wide and are present on all major digital download portals.

## LIMITED SOFTWARE WARRANTY AND LICENSE AGREEMENT

This Software is licensed, not sold, to the User by Paradox Interactive AB and its authorized licence holder and may only be used under these following restrictions. Paradox Interactive AB reserves all rights not expressly released to the User.

**Copying.** The License Agreement allows the User to use the Software on one computer at a time, with the exception for such Network games that are described in the documentation enclosed with the Software. Copying of the Software is illegal.

**Restrictions in User rights.** The Software and the enclosed printed matter is protected by copyright laws. The User overbinds not to in any way recreate the Software's source code so that it can be apprehended by the User or anyone else. The User may not change, adapt, translate, sub-let, lease, sell with profit, or distribute the Software, nor may he store it on a public network or create derivative products based on the Software or any of its parts. The User overbinds not to, in whole or part, spread the Software or its printed documentation to others, or to electronically transfer it from one computer to another over a network.

**Rights.** The User owns the original CD ROM discs on which the Software is stored, but Paradox Interactive reserves the rights of ownership to all copies of the actual Software. The Software is copyright protected.

Please consider registering your game, using the activation code. This gives you easy access to our tech support forums and various other useful discussion forums about the game: <http://forum.paradoxplaza.com>

# CONQUER THE OCEANS

[WWW.PARADOXPLAZA.COM](http://WWW.PARADOXPLAZA.COM)

[WWW.SHIPSIM.COM](http://WWW.SHIPSIM.COM)

[HTTP://FORUM.SHIPSIM.COM](http://FORUM.SHIPSIM.COM)



PDX5605US

© 2010 Paradox Interactive. All rights reserved.

Ship Simulator Extremes is a trademark of VSTEP. Printed in US.